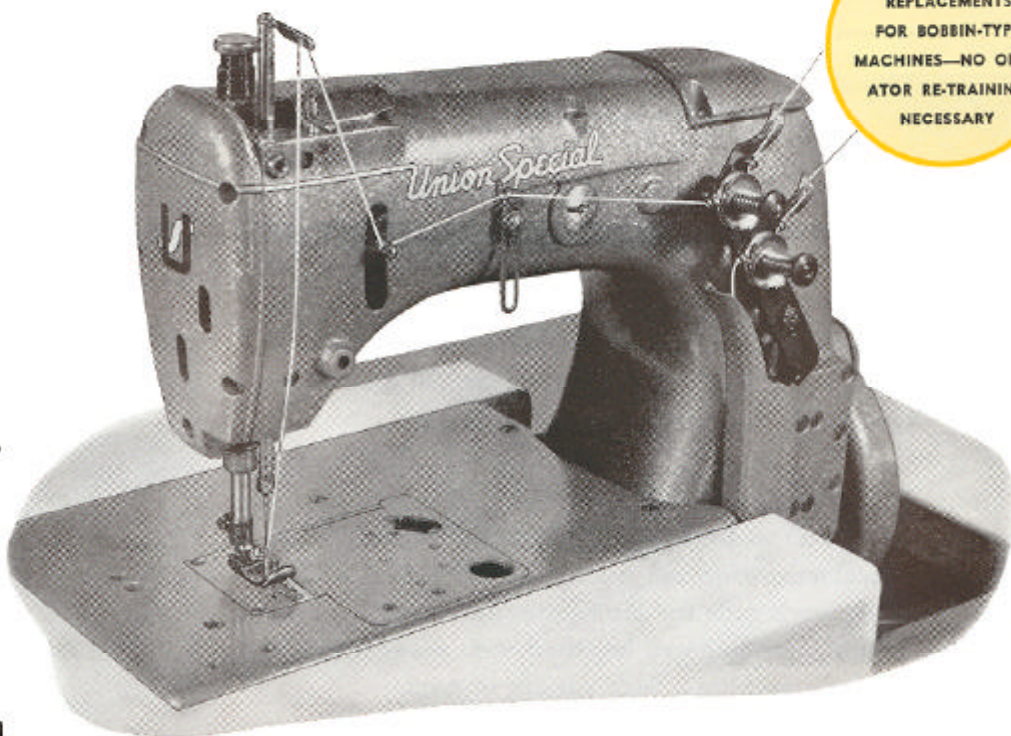


BOBBINLESS ZIG-ZAG STITCH MACHINE

STYLE 53100 A

For Attaching
 Lace and Trim
 To Slips,
 Nightgowns,
 Panties,
 Foundations, Etc.

- **No Bobbin to Change**
- **Top Quality Work**
- **High Speed**
- **Fast Acceleration**
- **Increased Production**
- **Improved Seam Elasticity**
- **Automatic Lubrication**
- **No repairs or re-stitching due to bobbin "run-out"**

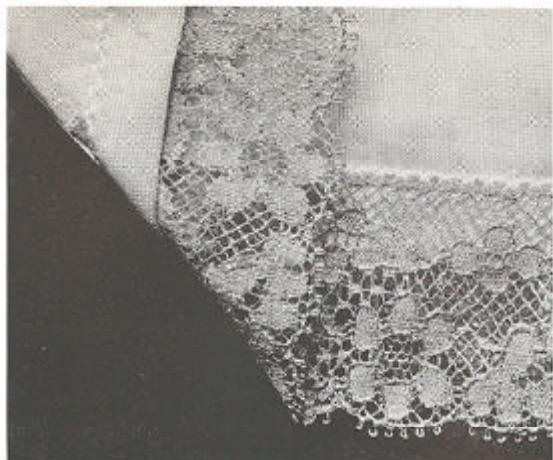


DIRECT
 REPLACEMENTS
 FOR BOBBIN-TYPE
 MACHINES—NO OPER-
 ATOR RE-TRAINING
 NECESSARY

STYLE 53100 A is a plain feed, single-needle, zig-zag stitch machine especially designed for attaching lace to nightgowns, slips, and panties made from light to medium weight knit and woven fabrics of cotton, nylon, dacron and similar materials. It is recommended also for hemming panels on two-way stretch foundations, and for purl edge stitching on children's knit undergarments. Needle zig-zags up to 1/8 inch.

SPECIFICATIONS

| | |
|----------------------------|------------------------------------|
| Stitch Type | 404 |
| Stitch Range | 9-16 S.P.I. |
| Standard Setting | 14 S.P.I. |
| Zig-Zag set at | 3/32 inch |
| Needle zig-zag up to | 1/8 inch |
| Maximum Speed | 5000 S.P.M. |
| Installation | Semi-Submerged, Fully-Submerged |



Sample showing lace attached with Style 53100 A.

ZIG
ZAG
FLATBEDS



53100B

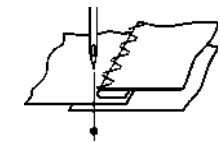
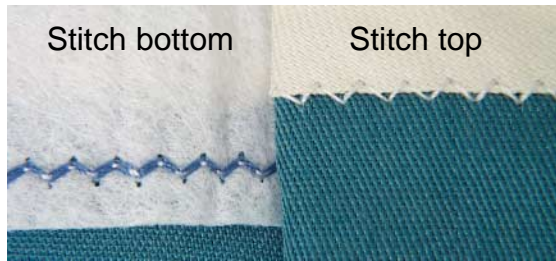
Double Locked Stitch Machines
for Attaching Pre-Made Waistband Linings
to Tops and Waistbands of Trousers, Skirts and Slacks



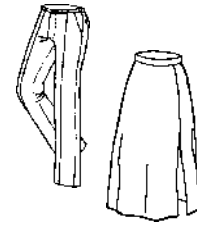
- High Quality Seam
- Enclosed Mechanisms
- Top Roller Feed
- No Bobbin
- Automatic Lubrication

Zig Zag Double Locked Stitch Machines

53100B 53100C



Stitch/seam:
404 LSb-1 modified



STYLES 53100B and *53100C* are single-needle, two-thread, flatbed, zigzag stitch machines with plain feed for attaching pre-made waistband linings to tops and waistbands of trousers, skirts, and slacks. The presser foot is designed with a guide on its left side for guiding the top ply of the waistband lining under the center of the needle hole.

Some features of these machines:

- A clutch-driven upper roller helps produce a flatter seam
- A lightweight presser bar and needle bar driving mechanism allow fast acceleration and high-speed operation
- Needle zigzag is adjustable from a straight line to $\frac{1}{8}$ " (3.2mm)
- The needle bar drive mechanism is fully enclosed within the machine head, and driven from a cam enclosed in an oil bath
- An automatic, filtered lubrication system

STYLE 53100B is fitted with a folder designed to lead the lining in from the right; waistband lining comes from a roll. The folder is adjustable for $1\frac{1}{4}$ " (31.8mm) to 4" (101.6mm) prepared waistband lining and is adjustable to obtain a $\frac{1}{8}$ " (3.2mm) to $\frac{3}{4}$ " (19.0mm) heading on the canvas to the left of the needle. The folder will handle plain waistbands or gripper type having rows of braided rubber.

53100B



53100C is the same as 53100B,



except without folder

| | | | | | | | | |
|-------------|---|------------|---------|--------------|-----------------------|--------------------|-------------------------------------|-------------|
| | | | | | | | | |
| 1 163GAS | 2 | 1.6 to 2.8 | 9 to 16 | 8mm 5/16" | plain, with roller | light to medium | adjustable 0 - 3.2mm 0 - 1/8" | 4000 SPM |

JUKI

Union Special

www.unionspecial.com
Union Special Machine Company,
One Union Special Plaza, Huntley, IL 60142

Distributed by: